

TECHNICAL DATA SHEET

RADIAL FAN nr. AFGG-25_25



G&G filtration CZ, s.r.o.

A Hrubínova 1903/9, 66451 Šlapanice, CZ
 IČ 05226953 IČ DPH CZ05226953
 E info@ggf.cz W www.ggf.cz

ITEM1

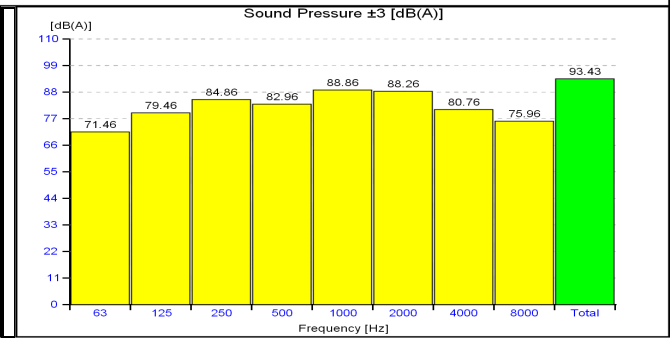
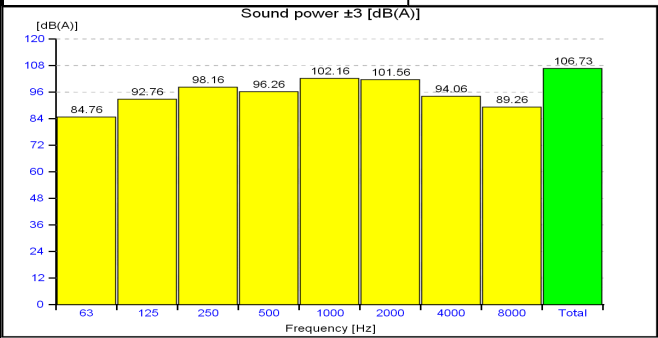
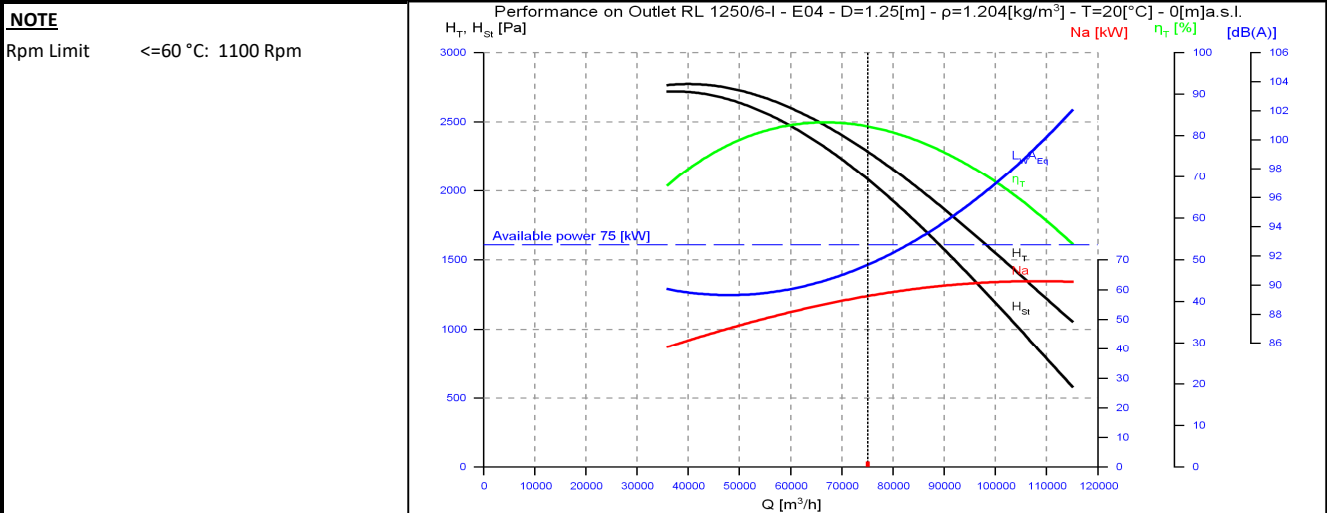
Document printed by Aeraulica - Dimensions and performances can be changed without prior notice

Type and characteristics of the requested machine		performance on		Outlet
Flow rate	75000 [m3/h]	Capacity (Normal)		69883 [Nm3/h]
Total pressure	2500 [Pa]	Static pressure		
Working fluid temperature	20 [°C]	Fluid specific weight		1.204 [Kg/m3]
Installation altitude	0 asl [m]	Specific weight std (20 [°C], 0 asl [m])		1.204 [Kg/m3]

Suggested model and effective characteristics				performance on		Outlet
Model	RL 1250/6-I	Execution	E04	Installation Type	A (free inlet and outlet)	
Fluid specific weight	1.204		1.204 [Kg/m3]	Revolution fan speed		985 [rpm]
Total pressure	2283		2283 [Pa]	Orientation		RD 0
Static pressure	2081		2081 [Pa]	Sound power LwA		106.73 [dB(A)]
Flow rate	75000		75000 [m3/h]	Sound pressure at mt.1.5 1/2 sf in open field		93.43 [dB(A)]
Capacity (Normal)	69883		69883 [Nm3/h]	Pipings	s>3mm = +3dB; 1mm<s<3mm = +4,5dB ; s<1mm = +6dB	
Power dem. at shaft	57.847		57.847 [kW]	Fan efficiency	Outlet	82.22 %
Motor power demand	57.847		57.847 [kW]			

Characteristics of chosen motor				Motor efficiency IEC 60034-30			IE3	PD ² impeller	240.0 kgm ²		
Code	315S06-50/std3P	shape	B3	Efficiency	94.6	94.9	94.4	PD ² needed	237.58 kgm ²		
Rated power	75.0 [kW]	n° poles	6	rpm	990	Load	100%	75%	50%	PD ² motor	630 kgm ²

ErP 2009/125/CE Regulament (UE) N. 327/2011				Notes			
Efficiency grade	64			N	77	Total efficiency	78.91 %
Impeller type	backward blades	Type of test	B/total	Flow rate	66810 [m3/h]	Pressure	2311 [Pa]



values of the noise of fan obtained in ambient not reverberant with inlet and outlet ducts fully insulated

TECHNICAL DATA SHEET

RADIAL FAN nr. AFGG-25_25



G&G filtration CZ, s.r.o.

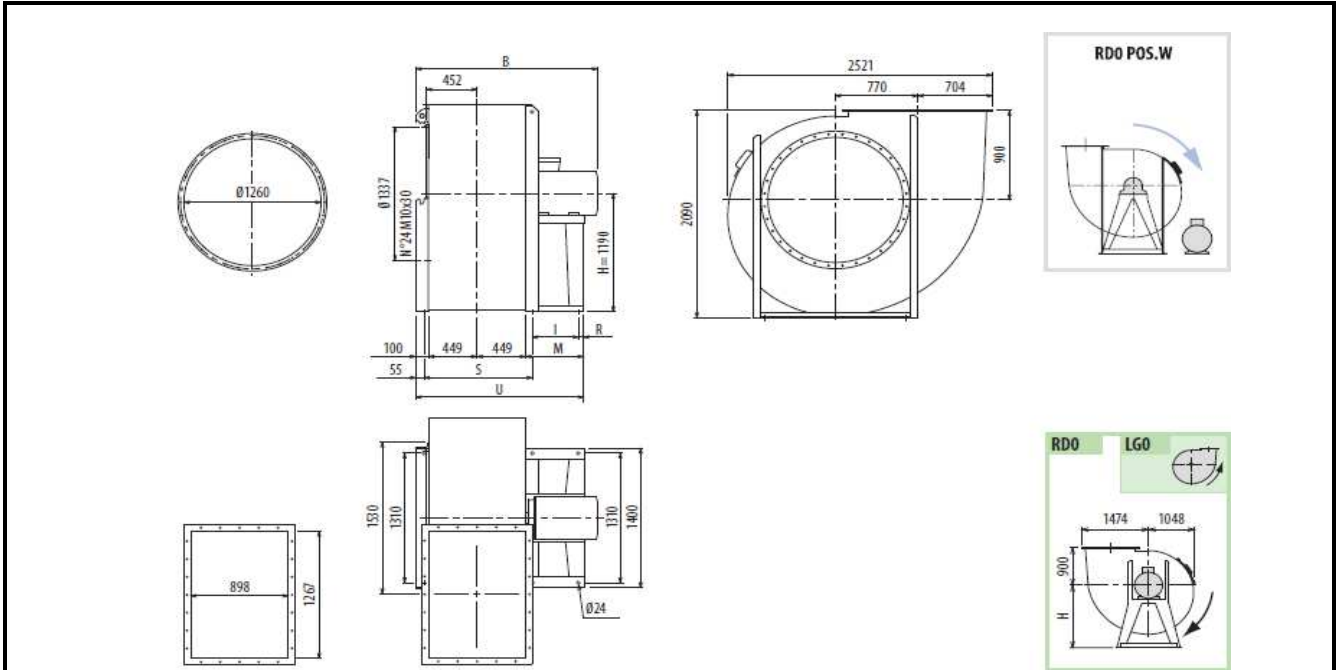
A Hrubínova 1903/9, 66451 Šlapanice, CZ

IČ 05226953 IČ DPH CZ05226953

E info@ggf.cz W www.ggf.cz

ITEM1

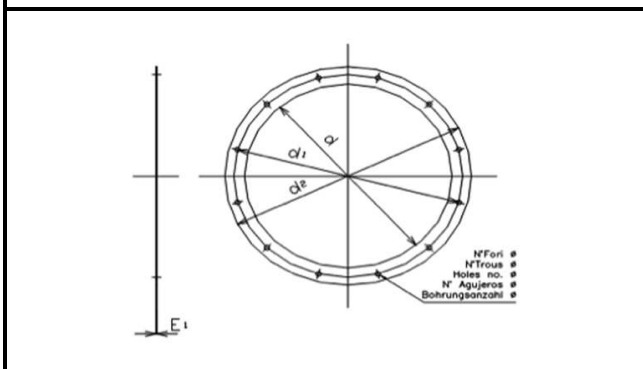
Document printed by Aeraulica - Dimensions and performances can be changed without prior notice



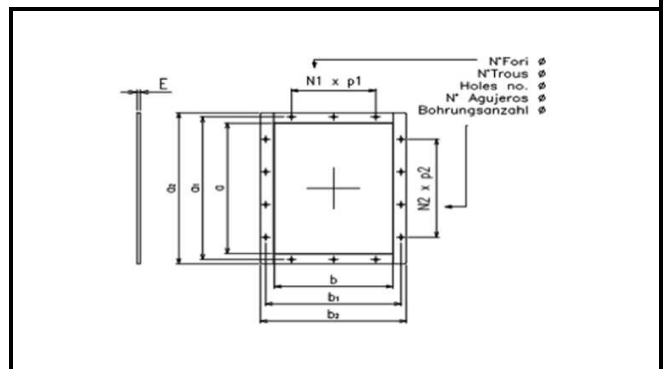
Indicative measures in the standard configuration. For detailed information contact your reference.

Indicative value of weight including standard motor.

B	I	H	H1	H2	M	R	S	U	PD2	kg
2030	675	1190	900	1500	800	45	1023	1798	240	1960



Cod	dxn°	d1	d2	Φ	E1
1260 A	1260x24	1337	1380	17	6



Cod	axb	a1	b1	a2	b2
1267x0898	1267x898	1347	978	1407	1038

N1xp	N2xp	n°	Φ	E
4x200	6x200	24	18	8