

TECHNICAL DATA SHEET

RADIAL FAN nr. AFGG-40_14



G&G filtration CZ, s.r.o.

A Hrubínova 1903/9, 66451 Šlapanice, CZ
 IČ 05226953 IČ DPH CZ05226953
 E info@ggf.cz W www.ggf.cz

ITEM1

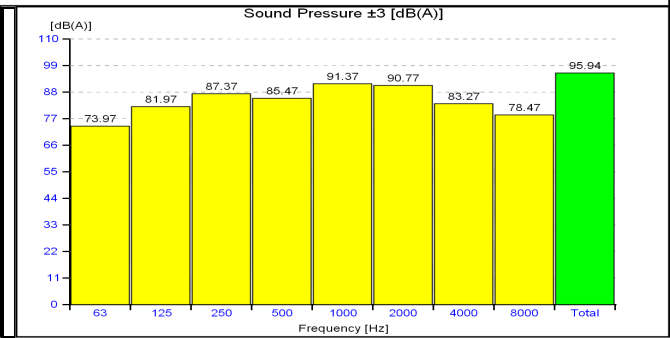
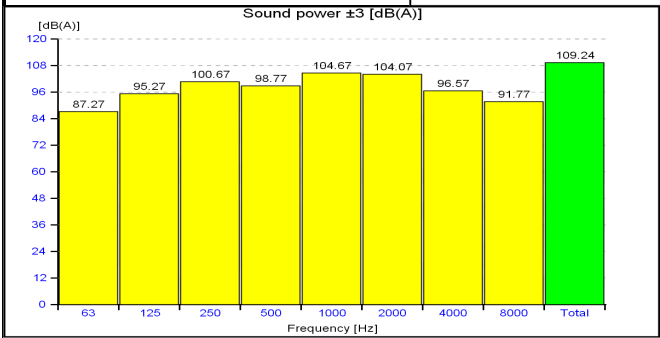
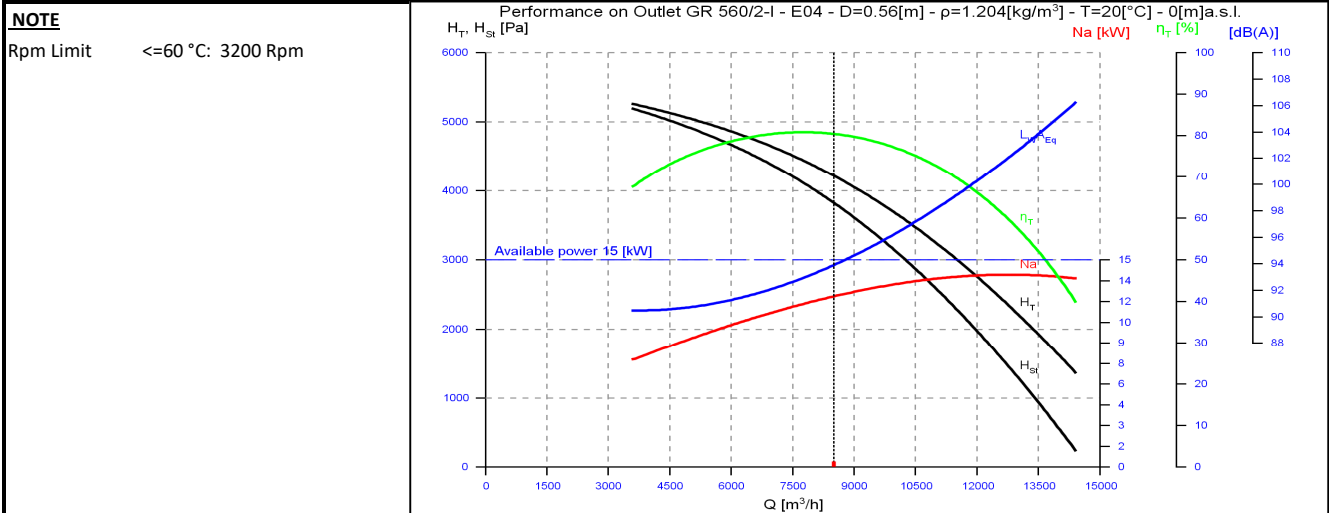
Document printed by Aeraulica - Dimensions and performances can be changed without prior notice

Type and characteristics of the requested machine		performance on		Outlet
Flow rate	8500 [m3/h]	Capacity (Normal)		7920 [Nm3/h]
Total pressure	4000 [Pa]	Static pressure		
Working fluid temperature	20 [°C]	Fluid specific weight		1.204 [Kg/m3]
Installation altitude	0 asl [m]	Specific weight std (20 [°C], 0 asl [m])		1.204 [Kg/m3]

Suggested model and effective characteristics				performance on		Outlet
Model	GR 560/2-I	Execution	E04	Installation Type	A (free inlet and outlet)	
Fluid specific weight	1.204	1.204 [Kg/m3]		Revolution fan speed		2935 [rpm]
Total pressure	4214	4214 [Pa]		Orientation		RD 0
Static pressure	3821	3821 [Pa]		Sound power LwA		109.24 [dB(A)]
Flow rate	8500	8500 [m3/h]		Sound pressure at mt.1.5 1/2 sf in open field		95.94 [dB(A)]
Capacity (Normal)	7920	7920 [Nm3/h]		Pipings	s>3mm = +3dB; 1mm<s<3mm = +4,5dB; s<1mm = +6dB	
Power dem. at shaft	12.372	12.372 [kW]		Fan efficiency	Outlet	80.42 %
Motor power demand	12.372	12.372 [kW]				

Characteristics of chosen motor				Motor efficiency IEC 60034-30			PD ² impeller	2.4	kgm ²			
Code	160MB2-50/std3	shape	B3	Efficiency	91.9	92.1	91.2	PD ² needed	2.36	kgm ²		
Rated power	15.0 [kW]	n° poles	2	rpm	2960	Load	100%	75%	50%	PD ² motor	16.9	kgm ²

ErP 2009/125/CE Regulament (UE) N. 327/2011				Notes				
Efficiency grade	64			N	74.2	Total efficiency	74.4	%
Impeller type	backward blades	Type of test	B/total	Flow rate	7758 [m3/h]	Pressure	4109 [Pa]	



values of the noise of fan obtained in ambient not reverberant with inlet and outlet ducts fully insulated

